



IN YOUR REGION

Edition 20 - September 2016

Regional sporting clubs fully equipped!

Western Australian sporting clubs were recently given the chance to upgrade their existing sporting equipment or purchase new gear in the latest round of the Community Sporting Club Equipment Subsidy Scheme.

The scheme, which started in December 2013, invites both regional and metropolitan sporting clubs across the state to apply for a \$500 equipment grant.

The latest round closed in May 2016 and saw 625 regional clubs successfully awarded a total of \$312,500 in grants thanks to the State Government's Royalties for Regions program.

Leisure Duty Manager at the Karratha Gymnastics Club (KGC), Amy Strange, said the subsidy meant a great deal to the organisation, which aims to instil enthusiasm in its students.

"The funding from the scheme has given KGC the opportunity to purchase new equipment so that our coaches can teach their students new skills," Ms Strange said.

"The equipment subsidy, together with fundraising money, gives us the opportunity to provide teaching aids at the club so that we can continually keep our gymnasts interested," she added.

Other regional clubs to receive a subsidy in the round included Toodyay Cricket Club, Moore River Netball Club, Karratha Roosters Senior Rugby League Club and Mandurah Surf Life Saving Club, to name a few.

The scheme is administered by the Department of Sport and Recreation. Visit www.dsr.wa.gov.au for more information.



KGC gymnasts practise on the beam, photos courtesy of KGC



Continued on page 2

DG Message

Welcome to the September edition of In Your Region for 2016.

This issue marks the 20th edition of In Your Region and celebrates a number of key milestones reached by the Regional Development Portfolio (Portfolio) in the past quarter.

In June 2016, Regional Development Minister Terry Redman launched the *Regional Development Strategy 2016-2025* (Strategy). The Strategy sets the focus and priorities for building vibrant regions with strong economies.

The Strategy builds on the significant achievements of the Portfolio in recent years and provides a clear direction for progressing and developing those key growth opportunities identified in each of the regions' respective Regional Investment Blueprints.

Also featured in this special edition is the Regional Services Reform Unit's launch of *Resilient Families, Strong Communities*, a roadmap that will see major reform in the delivery of housing, education, employment and human services for Aboriginal people living in regional and remote Western Australia.

I hope you will join me in celebrating these significant achievements.

I invite you to visit our website to find out more.



Ralph Addis
Director General

Continued from page 1

KGC's littlest members are beaming thanks to their new equipment, photo courtesy of KGC



Plan for developing the regions

Regional Development Minister Terry Redman recently outlined a strategic approach to building vibrant regions with strong economies, with the release of the *Regional Development Strategy 2016-2025*.

Minister Redman said the Strategy was built on the understanding that achieving good regional development outcomes requires a blend of economic and social investment, and ongoing support to ensure the sustainability of regional communities.

"Through the Strategy, we are refocussing the way we work, with greater emphasis on establishing the key foundations for economic development and driving new growth and investment in areas where regional advantages match national and global opportunity," Mr Redman said.

The Strategy provides a framework to prioritise and progress development opportunities with the most

potential emerging from the Regional Development Commissions' Regional Investment Blueprints and other key sources.

Setting a clear focus on creating jobs, growing the economy and building the capability of people in the regions, the Strategy outlines the following priorities:

- Developing people's capability to drive growth and prosperity.
- Enhancing key regional centres to capture investment.
- Investing in economic infrastructure to drive growth.
- Driving policy and service reform to remove barriers to growth.
- Fostering the growth of emerging industries.
- Supporting change capability in existing major industries.
- Identifying and promoting opportunities for investment.

Department of Regional Development Director General Ralph Addis said that investment was increasingly being directed towards major, evidence-based programs that address the systemic issues affecting the regions, in order to create jobs, attract investment and build sustainable communities.

"We want to build on the success we are already delivering through Royalties for Regions' development programs such as Seizing the Opportunity Agriculture, Pilbara Cities and the Southern Inland Health Initiative," Mr Addis said.

"This will ensure we are focused not only on our current prosperity but on the opportunities for future generations."

Visit www.drd.wa.gov.au to download your copy of the *Regional Development Strategy 2016-2025*.

Got 10 minutes to spare?

Tell us what it's like living in your region!

The Department of Regional Development, via Ernst & Young, is conducting the Living in the Regions survey again this year to find out more about regional communities in Western Australia.

Commencing Monday 10 October 2016, the survey is open to anyone above 18 years of age living in regional WA. Individual responses will be kept confidential.

About 10,000 people responded when the survey was last conducted in 2013.

Here is how regional WA responded to the 2013 survey:

- 83% of respondents wanted to stay living in the regions.
- 31% of respondents were born in the area in which they currently live.
- 74% of respondents were involved in local activities.
- People chose to live in the regions due to lifestyle, work commitments, their partners and/or strong affinity with the region.
- Wheatbelt and South West regions ranked highest for the sense of community in their area.

The department aims to conduct the survey every three years and encourages regional residents to participate.

The data collected will be used by government and non-government organisations to assist in decision-making and policy development for regional communities.

Visit www.drd.wa.gov.au/Regions2016 by 30 November 2016 to have your say and make a difference!

State of the Regions

The 2014-16 State of the Regions series came to a close on 8 June 2016, marking significant progress for regional development in Western Australia.

Presented by the Committee for Economic Development Australia (CEDA), and sponsored by the Department of Regional Development (DRD), the ten-part series titled Regional Development in WA saw sold-out forums in each of the state's nine regions before the finale in Perth.

The series aimed to increase understanding of how Western Australia's regions are adapting and transitioning for the future through innovation and best practice principles; how they are capitalising on new business opportunities; and what industry profiles are evolving in response to changing circumstances.

The series also provided the State's nine Regional Development Commissions with a platform to launch their respective Regional Investment Blueprints (Blueprints). Each Blueprint maps-out its region's growth and development aspirations and ties into a framework for sustainable growth spanning the next 35 years.

Regional Development Minister Terry Redman said the series, which invited participation from business, industry, government, community and academic leaders, had been invaluable in highlighting the challenges and opportunities for growth facing each region.

"CEDA's State of the Regions series has generated robust discussion on development and growth opportunities within WA's regional economies," Mr Redman said.

Department of Regional Development Director General Ralph Addis agreed that the series emphasised the potential of the regions.

"Building on the strengths and addressing the challenges of individual regions is vital to their future sustainability," he said.

One of the series' most significant outputs was the release of CEDA's final report, *Regional Development in Western Australia*.

The document captures the key findings and outcomes of the series and comprises five overarching actions to help overcome barriers to growth, and capitalise on opportunities to ensure sustainable, long-term growth for the regions:

- Encourage strong leadership in the regions by providing local leaders with the opportunity to make and be accountable for their own decisions.
- Agree on each region's comparative advantages, with a view to developing region-specific branding within the wider regional development context.
- Develop a pipeline of large, transformational investment projects that align with State-wide priorities and each region's comparative advantages.
- Strengthen regional investment decisions by introducing a transparent investment prioritisation framework and robust evaluation framework for funding proposals.

- Create innovation hubs in each region to connect local communities and businesses with government, industry, innovators and financiers.

Signifying another major achievement for regional development in Western Australia, the series finale saw Minister Redman launch the *Regional Development Strategy 2016-2025*.

"As WA's economy transitions, regional development is uniquely positioned to help broaden the economy through a focus on jobs and growth," Mr Redman said.

"The Regional Development Strategy provides a framework to prioritise and progress development of opportunities with the most potential emerging from the Blueprints and other sources."

Mr Addis also acknowledged the Strategy as a marker of significant progress.

"Economic development is critical to the future of regional communities, and the State and nation depend on the economic success of the regions," he said.

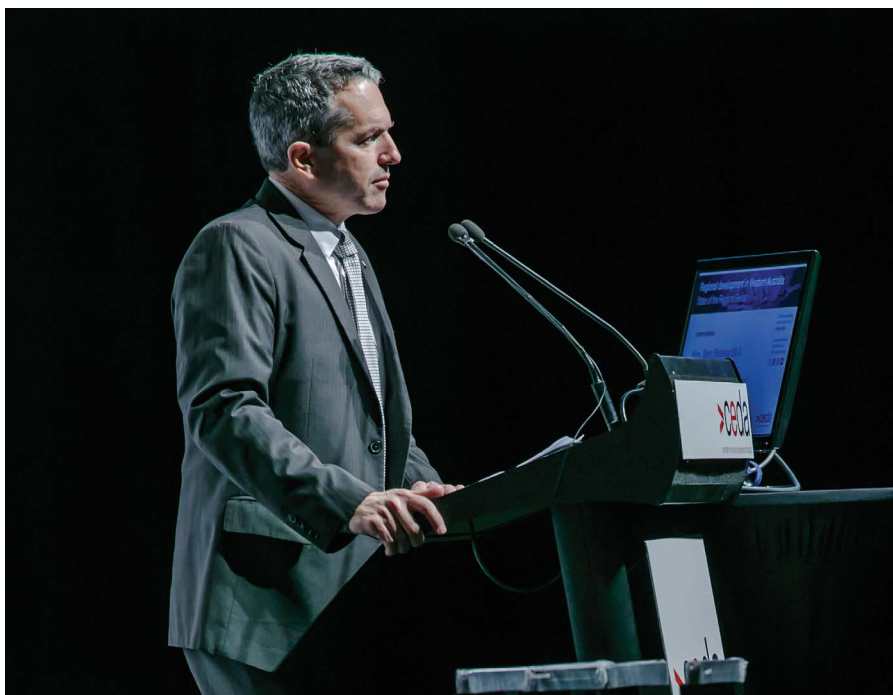
"The Strategy provides direction to build vibrant regions with strong economies through jobs growth, economic growth, and capable people. It presents an integrated approach for government, the private sector and communities to work together in driving the regional development agenda in a way that addresses region-specific challenges and positions the regions to harness future opportunities.

"The Regional Investment Blueprints are tailored to the regions' contexts and both complement and support the Strategy to reflect the State's overall interests.

"Congratulations to all Portfolio staff who have worked diligently to achieve this greatly anticipated outcome."

To download a copy of the *Regional Development Strategy 2016-2025*, visit www.drd.wa.gov.au

For more information on CEDA's event series, 2014-2016 State of the Regions: Regional Development in WA, or to download a copy of CEDA's report, *Regional Development in Western Australia*, visit www.ceda.com.au



Minister Redman at the State of the Regions series finale, photo courtesy of CEDA

Working closely with indigenous partners

Innovative not-for-profit organisation Jawun will continue to work closely with indigenous partners in Western Australia thanks to \$850,000 in Royalties for Regions funding to support its secondment program over three years.

Funded as part of the Aboriginal Governance and Leadership Development Program, Jawun increases the capacity of indigenous leaders, organisations and communities to achieve their own development goals.

Every year, Jawun sends 400 staff from government and corporate organisations to inject business skills, expertise and acumen into indigenous organisations across nine regions in Australia.

In Western Australia, Jawun facilitates and manages the engagement of 80 secondees each year to work closely with indigenous partners across the Kimberley.

East Kimberley Jawun Director Brett Barlee said Jawun would expand its work

in Western Australia while continuing to build the capacity of organisations in the West and East Kimberley.

"Jawun approaches Indigenous empowerment and self-determination with support at the organisational level through its key partners and, at the regional level, through recently-established 'Empowered Communities' organisations in the East and West Kimberley," said Mr Barlee.

The funding will assist Jawun to deliver its program and achieve measurable improvements in Aboriginal business capability, employment and new business opportunities.

Several core organisations across the Kimberley actively partner with Jawun.

Visit jawun.org.au for more information.

Jawun secondees Jacob Azzopardi and Kevin Chen with Richard Long of Outback School Bus Services, photo courtesy of David Rennie



Roadmap to reform launched

The State Government is reforming housing, education, employment and human services to improve the lives of Aboriginal people in regional and remote Western Australia.

Driven by the State Government's Regional Services Reform Unit (RSRU), with staff in Karratha, Broome, Kununurra and Perth, regional services reform aims to improve the lives of Aboriginal people in regional and remote Western Australia.

Regional Development Minister Terry Redman and Child Protection Minister Andrea Mitchell launched the *Resilient Families, Strong Communities* roadmap in July 2016, marking the start of discussions with residents of remote Aboriginal communities about better living conditions and opportunities.

State Reform Leader Grahame Searle, head of the Regional Services Reform Unit, said it was an important step towards building stronger Aboriginal communities and more resilient Aboriginal families.

"This is a journey towards long-term and systemic change and it involves things that only the Government can do, things that only communities can do, and things that only families can do to make things better," he said.

The reform unit will work with Aboriginal communities over the next two years to progress the 10 priority actions identified in the roadmap.

These priority actions include working on new ways to deliver government-funded services for Aboriginal families and children, identifying large remote communities to receive infrastructure upgrades, and implementing a schools project to accelerate student improvement in opt-in schools in the Kimberley.

The regional services reform is being steered – through representation on Pilbara and Kimberley Strategic Regional Advisory Councils, which also

include Commonwealth Government and community services sector members – by four State Government departments, including the Department of Regional Development, and eight Aboriginal advisers.

As part of the next phase of the reform, residents of remote Aboriginal communities throughout Western Australia will be visited to discuss the roadmap and the opportunities for change for each community.

Regional services reform has started in the Pilbara and Kimberley regions. It will be extended over time to other regions of Western Australia and tailored to their circumstances.

For more information, visit:

www.regionalservicesreform.wa.gov.au

www.facebook.com/regionalservicesreform

Minister Mitchell, Ian Trust, Minister Redman, Ted Carlton, Agnes Armstrong and RSRU Advisor Patrick Davies at the roadmap launch in Kununurra



Artistic edge for new Collie Health Service

The redeveloped Collie Health Service will be the latest public building to feature the artwork of talented Western Australian artist, Jahne Rees, when it opens next year.

The \$7.8 million redevelopment will transform the hospital into a contemporary, best-practice healthcare facility further enhanced by Mr Rees's entry statement piece. Mr Rees hopes his art will be welcoming and inspirational while offering some functional elements.

The artwork is part of the State Government's Percent for Art Scheme, an initiative which seeks to improve the quality and value of public facilities by using a percentage of a development's overall budget to commission public art.

Selected from a pool of talented artists, Mr Rees said his inspiration for the artwork stemmed from an interest in the role that history and culture play in the changing face of regional areas over time. Mr Rees said he was particularly interested in regeneration, creating communities and the local, natural environment.

"I am creating an engaging and tactile focal point that will complement the surrounding Collie Health Service architecture and celebrate the local environment, history and culture," Mr Rees said.

"The history of the timber, rail and coal industries will be represented by the materials chosen. These materials will be layered with symbols of the natural environment such as the incredible tail feathers of the majestic red-tailed black cockatoo, a local inhabitant of the region."



The red-tailed black cockatoo

"This entry statement will provide a strong sense of place and, in the context of a hospital, create a vision of expanding wings as a metaphor for vitality and wellness. The piece will represent the enduring presence of wildlife in the area for the enjoyment of the community for years to come."

An ongoing collaborative arrangement with builder Liam Cole will ensure a hands-on approach is carried out across a range of materials, thereby maintaining creative integrity and quality control throughout the project.

The Collie Health Service redevelopment is being undertaken as part of the Southern Inland Health Initiative's \$300 million infrastructure program, made possible by Royalties for Regions. The program will improve hospitals and health services in 37 towns across the Wheatbelt, Great Southern, Mid West and South West.

The three-stage project involves the fit-out of a new administration centre, hospital entry, equipment and medical stores, and refurbishment of the emergency department.

In Your Region is going digital!

DRD values its stakeholders' ongoing support and readership of the In Your Region newsletter.

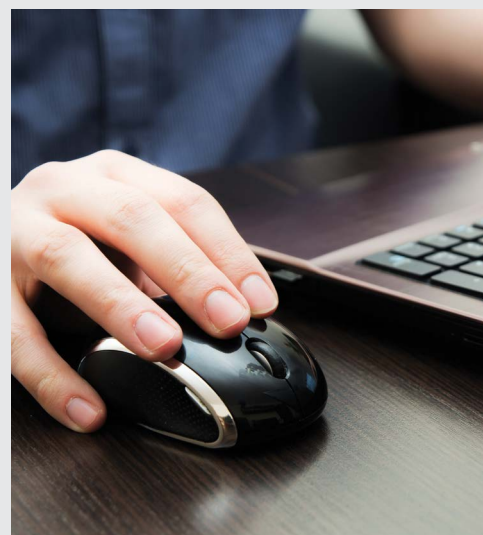
In an effort to reduce its environmental footprint and at the same time provide readers with more convenient access to each edition, DRD is taking steps towards making email its primary means of newsletter distribution.

DRD will continue to send physical copies of In Your Region to subscribers for the remainder of 2016. This will include distribution of the December edition.

As of March 2017, DRD will send subscribers a link to the latest edition of In Your Region via email. Should you wish to subscribe to In Your Region via email, please contact **communications@drd.wa.gov.au**

If you are already an email subscriber and wish to keep your subscription, no action is required.

Edition 21 of In Your Region will be available in December, bringing you more updates on the exciting Royalties for Regions projects benefiting regional communities across the state.



Gascoyne Junction welcomes much needed bridge

Gascoyne Junction residents and surrounding communities will soon have more assured transport access during river overflows thanks to a new low-level bridge system at Gascoyne Junction, made possible by a \$9 million Royalties for Regions investment.

The new bridge will enable access between the north and south sides of the Gascoyne River during ordinary rain and will facilitate quicker access between the sides after major floods.

The structure will comprise two bridge structures connected by an island on the south side of the river. The smaller of the bridges will measure approximately 72 metres in length while the larger will span approximately 430 metres.

The Gascoyne River is prone to flooding and closure of the current crossing, originally built in the 1950s, contributes to an average annual road closure time of 33 days.

Closure of the existing crossing has a severe economic impact on the region, causing major disruptions to mining and pastoral activity and restricting area access for residents and tourists.

Shire of Upper Gascoyne Chief Executive Officer John McCleary said that in times of flooding, the existing crossing was unreliable and effectively split the town in two. He said the closures often left residents with no access to facilities including retail, school and health services.

"The new bridge will address the issues which have affected the town's ability to capitalise on our many natural assets and it will generally improve the lives of local residents who become cut-off when the crossing closes," said Mr McCleary.

Gascoyne Development Commission Chair Tony Beard said the Commission was pleased to have assisted the Shire in securing the Royalties for Regions investment for the bridge.

"The bridge at Gascoyne Junction is vital for local residents and pastoralists as well as the mining and tourism industries as it will ensure a safe and reliable inland transport corridor," Mr Beard said.

The new bridge will reduce the crossing's closure times by 99 per cent, which will have a positive impact on tourism activities that are often prevented for extended periods of time when flooding occurs.

Improved access to developing tourism sites such as Kennedy Range and Mount Augustus national parks will also reduce mass-cancellations incurred during periods of increased river flow.

Managed by the Shire of Upper Gascoyne, construction on the project has commenced with work expected to be completed by the end of 2016.

Artist's impression of a passing lane to be constructed on the new bridge, image courtesy of Shire of Upper Gascoyne



Just Another Day in WA

With so many unique experiences waiting to be discovered in Western Australia, it is easy to see why locals take for granted the same everyday moments that visitors to the state would find 'extraordinary'.

This is the message at the heart of Tourism WA's latest marketing campaign, 'Just Another Day in WA'.

Developed under the Experience Extraordinary brand, together with advertising agency Cummins&Partners, the campaign aims to showcase the extraordinary experiences that WA has to offer.

Partly funded by Royalties for Regions under the Regional Tourism Marketing Program, the campaign is an important component of the State Government's strategy to grow the value of WA's tourism sector to \$12 billion by 2020.

Extensive research carried out during the campaign's development revealed few people outside of WA were aware of the transformation of Perth and its surrounds, or appreciated how WA was different to other destinations in the country.

Since its launch in June, the campaign has showcased the state's beauty in several short films funded by Tourism WA. The campaign's website has also brought to life a number of personal



accounts of WA travel experiences, submitted by members of the public.

One of these accounts comes from Sean Scott, who describes Cape Le Grand National Park as his favourite place in the world following a family trip to the park's Lucky Bay Camp Ground.

"When we first arrived, we were met by friendly kangaroos down on the beach," says Mr Scott.

"These guys [the kangaroos] just hung out most of the day and night down there and around the camp.

"I was surprised at just how friendly they were. My son would go down and hang out with the kangaroos any chance he could get. They would let him pat them and they even laid down and slept on his lap.

"With the pristine white sand and crystal-clear, blue water – it was our paradise."

In 2016, more than 17 films presenting personal experiences in WA will be created along with other supporting materials including photography.

To read more accounts of WA travel experiences, visit www.justanotherday.westernaustralia.com



Top: Kalbarri National Park

Left: Cape Le Grand National Park, photos courtesy of justanotherdayinwa.com

Mukinbudin students illustrate the joys of reading

Students in the Wheatbelt town of Mukinbudin recently had the unique opportunity to paint a house – a *cubby* house that is!

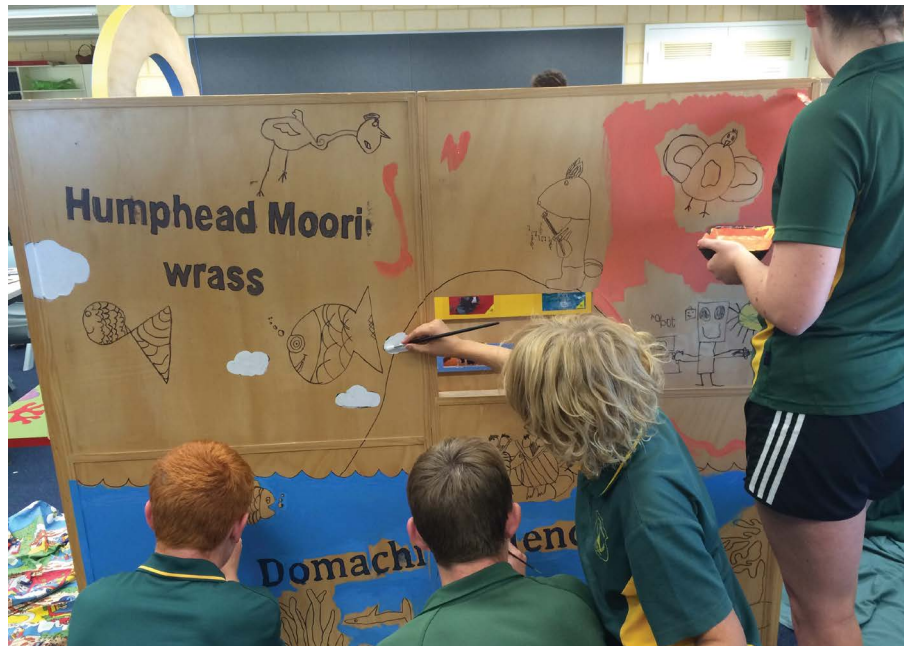
Known simply as the 'Book Cubby', the reading sanctuary is one of three cubbies that travel through metropolitan and regional WA as part of the State Library of Western Australia's (SLWA) family literacy program, Better Beginnings.

The cubbies are interactive exhibitions of books written and/or illustrated by children and communities within Australia and around the world.

In 2015, Mukinbudin Library was the lucky winner of a prize draw run by the SLWA for libraries that had delivered the Better Beginnings program to their local kindergartens.

Mukinbudin's success saw children from the community's kindergarten through to year 10 participate in a cubby decorating workshop run by talented local artist and illustrator Jodie Davidson.

Held over two days in May 2016 at Mukinbudin District High School, the workshop saw the children work together under the guidance of Ms Davidson and school staff to



Students let their creativity flow, photos courtesy of the SLWA

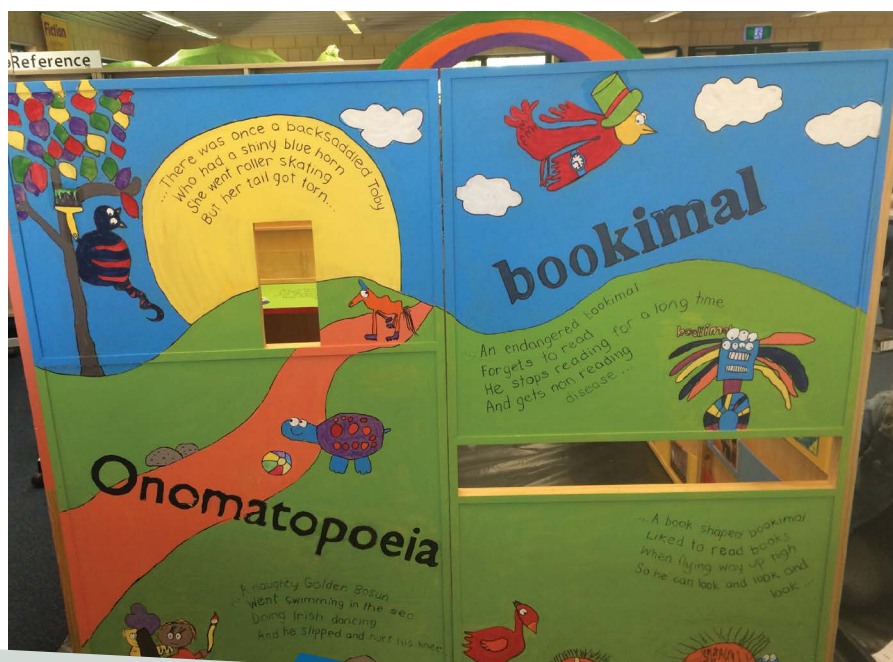
transform the Book Cubby into an inspiring piece of art.

"The joy of this book cubby design was that very little of it was predetermined," Ms Davidson said.

"There were coloured paints, stencilled words sourced from within the Better Beginnings books and a selection of

words printed on cards used to stimulate bright young minds.

"A day-and-a-half and six workshops later, every child from kindy through to year 10 had been a part of the process – it was an amazing achievement resulting in a wonderfully creative and unique artwork that I am immensely proud of," she said.



Since the workshop, the now colourful Book Cubby continues to travel to libraries across WA, encouraging families and children of all ages to participate in literacy activities.

Having already visited libraries in eight regional communities this year, the remainder of 2016 will see the Cubby travel to libraries in Katanning, Manjimup and Northcliffe.

Better Beginnings is proudly supported by the State Government's Royalties for Regions program.



Regional Development Minister Terry Redman, FHC staff and guests celebrate soon-to-be Emu Directional Walking Trail, photo courtesy of Peel Development Commission

Tourism on track in Dwellingup

Dwellingup's Forest Heritage Centre (FHC) was recently refurbished thanks to a \$149,900 investment from the 2015 Peel Regional Grants Scheme.

A vibrant community hub and popular tourist attraction, the centre nurtures learning and creativity in the arts, and celebrates the natural environment and local history of the Peel region.

FHC Manager Shani Holster said the investment had made the centre a more inviting place to work and visit, having funded the installation of new air-conditioning, roofing, and insulation in the building.

"The funding has made an enormous difference to the FHC," Ms Holster said.

"Before, the centre was showing its age with termite damage and poor climate control that meant the building could easily reach temperatures in excess of 40 degrees on hot days and remain below 10 degrees on cold days.

"The installation of new ceilings and insulation has greatly improved the

climate and light control in the centre, enabling us to provide a better quality exhibition space for artists."

The upgrades formed the first stage of an overall FHC revitalisation. Stage 2 will be funded by an additional investment of \$195,150 recently awarded in the 2016 Peel Regional Grants Scheme, and will see improvements to the centre's workshop facilities, amphitheatre and foyer.

The FHC will also welcome a community walking trail in surrounding bushland, made possible with an additional \$35,350 investment from the 2016 Peel Community Chest Fund.

"The Emu Directional Walk Trail will connect the FHC to the Dwellingup Town Centre 1.2 kilometres away," said Ms Holster, who added, "There has been a lot of support for the trail from local businesses and the community."

The trail will feature a series of playful emu signs designed and painted by local artist Wendy Binks, who said the artworks would mimic popular Dwellingup activities.

"I am having all the emus doing things relating to Dwellingup - one will be riding a bike, another will be in a canoe, and because there are a lot of artists in the region, one will be painting an easel," she said.

"There's a lot on offer in Dwellingup and this trail is about connecting the dots of all the great activities there are to do in the region."

Artificial emu footprints will feature every five metres along the track. It is hoped that with encouragement, tourists will photograph the iconic signs and share their experiences on social media, growing the centre's profile as a must-see tourist attraction.

The trail is expected to be completed in January 2017.

The Peel's Regional Grants Scheme and Community Chest Fund are administered by the Peel Development Commission and made possible by the State Government's Royalties for Regions program. For more information, visit www.peel.wa.gov.au

Muresk is always in season

Muresk Institute's Summer and Winter School Programs are a hit amongst school leavers looking to further their training and workers keen to learn new skills.

While the programs were first established to meet demand from workers wanting short, sharp courses, they now also cater to those people wanting to gain employment in the agriculture industry.

Expert trainers run the program at the Northam campus and students are provided with targeted training across livestock and cropping production systems, and experience in operating a range of equipment they would not have previously used.

With technology in agriculture constantly evolving and workers wanting to up-skill, it is no wonder the programs are constantly in high demand and places get filled up very quickly.

Student numbers have been growing steadily, with this year's winter classes split into three different groups to accommodate the increase in enrolments.

Chairman of the Muresk Institute Farm Advisory Committee Lincoln Murray delivers the Precision Agriculture course that focuses on the use of satellite guided equipment, such as automatic steering tractors, in agricultural operations.

"All industries worldwide are being affected by rapid technological advances and agriculture is no different," Mr Murray said.

"We need a diverse agricultural workforce capable of keeping up with rising demand for WA food exports and so the focus of these short courses is to have



Boyd Holden leads student through a low stress livestock handling course, photo courtesy of Department of Training and Workforce Development

people trained quickly to be job ready in these exciting times."

More than 100 students have attended the Summer and Winter School Programs since they commenced in 2015.

Are you or someone you know interested in Muresk's Summer or Winter School Programs?

Visit www.dtwd.wa.gov.au/mureskinstitute to sign up today!

Level 2, 140 William Street, PERTH WA 6000 | Postal Address : PO Box 1143, WEST PERTH WA 6872 | Telephone : +61 8 6552 1800

Free call : 1800 049 155 (Country Only) | Facsimile : +61 6552 1850

Email : info@drd.wa.gov.au | Website : www.drd.wa.gov.au